



# casella

MADE IN ITALY



# HOSE REEL Turbine System



## HY-TURB: simple, strong, efficient, for your friendly Irrigation

Hose reel with hot galvanized chassis. High efficiency turbine, with internal by-pass valve, directly connected with gear-box. Manual or hydraulic rotation of the upper frame. Hydraulic lifting of 3 wheels trolley, sprinkler and 4 meters flexible hose.

### HY-TURB S

75/400 - 82/350 - 90/300



### HY-TURB M

90/500 - 100/500 - 110/400 - 120/300



### HY-TURB L

110/620 - 120/500 - 125/480



### HY-TURB P

110/620 - 120/520 - 125/500 - 140/450



Chassis with high resistance bearing structure, for a long-term use and high number of movements.



Turbine directly connected with gear box and by-pass valve which can be driven mechanically or electrically



Computer for rewinding speed control, with solar panel and stainless box.





# HOSE REEL Engine System



## The most productive, for a fast and optimal Irrigation

Necessary for PE pipes bigger than Ø140. The diesel engine ensures a reliable rewinding in each kind of condition. Hydraulic system for the highest efficiency in rewinding and the easiest way to use and move the hose reel. Rotating platform fixed on the ground (EXP.M excluded) for better stability. 2, 3 or 4 wheels trolley.



### IDEAL SYSTEM FOR EFFECTIVE ENERGY SAVING

This type of machine exploits a small diesel engine for both hose rewinding and hydraulic controls. All the pressure of water can be used only for irrigation. The pressure losses of the machine are thus really lower with an average fuel consumption of the diesel engine of only 300gr/h. It is the only system allowing spreading of manures or waste waters at high rewinding speeds (10 to 300h).



## EXP M

90/500 - 100/500 -  
110/400 - 120/300



## L

90/500 - 100/500 -  
110/500 - 120/400 -  
125/330

## LL-LLS

110/650 - 120/620 - 125/600 -  
140/550 - 150/400 - 160/350



## PX (2R /4R)

120/670 - 125/650 -  
140/550 - 150/530 -  
160/420



## PL



125/600 - 140/550 - 150/500 - 160/350

## PLS



125/800 - 140/780 - 150/650 - 160/520 - 180/430

### HYDRAULIC SYSTEM

With a distributor up to 7 levers, it ensures maximum reliability, efficiency and practicality of use. Composed of: servo-drawbar front jack, jacks allowing lowering the wheels for the carriage position or lifting them for the working position by leaning the machine on a turning platform which allows for 360° rotation (mod. EXP.M excluded). Jacks on rear stabilizers securing the machine to the ground in the working position.



### SPRAY BOOM:

irrigation with spray boom with rewinding speed up to 300 m/h.





# HOSE REEL with integrated Motorpump

## The compact solution to get the best

Hose reel with integrated motor-pump. Engines: FPT-Iveco, Volvo Penta e John Deere (power from 80 to 238 hp) and multi-stage pumps (Rovatti, Caprari e Sidermeccanica)



**PXMP** (2R / 4R)  
120/670 - 125/650 - 140/550 -  
150/530 - 160/420

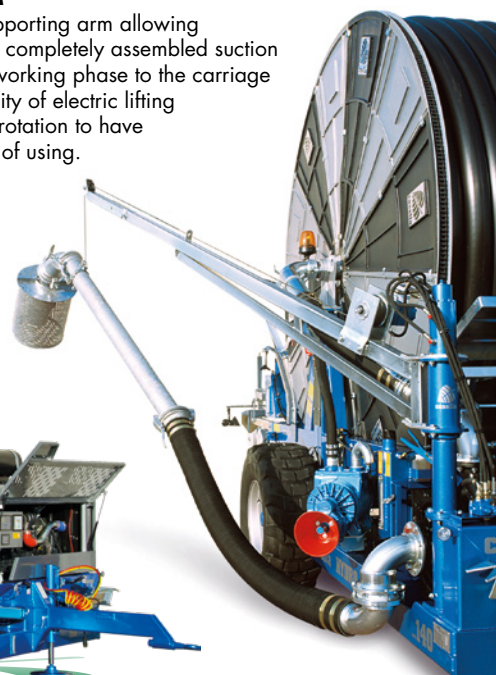
### WINCH ARM

Extractable supporting arm allowing positioning the completely assembled suction line, from the working phase to the carriage phase. Possibility of electric lifting and hydraulic rotation to have an easier way of using.



### PLMP

125/600 - 140/550 -  
150/500 - 160/350



### PLSMP

125/800 - 140/780 - 150/650 - 160/520 - 180/430



### PLLSMP-4R

140/780 - 150/650 - 160/520 - 180/430

### PUMP SUCTION SLOW STOP

Device to stop water inlet in case of relaunch pump function or to stop the pumping station under overpressure conditions.



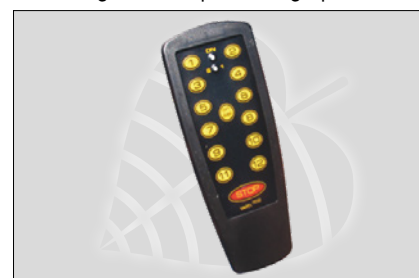
### CONTROL PANEL

Electronic control unit for a complete control of the engine, irrigation computer and electronic control unit of rewinding pressure.



### REMOTE CONTROL FOR HYDRAULIC MOVEMENTS

Distance control of all hydraulic motions, thus facilitating machine positioning operations.





# MOTORPUMP C€

**All the applications for all the necessities**

Chassis in high resistance iron tubulars with integrated tank.



Motorpump for irrigation from lake or canals



Motorpump for drip irrigation, with filters and fertilizing integrated systems



Motorpump with soundproof engine



Motorpump for distribution of manure or slurry

## Tomato trailers

Bilateral dumper for tomato harvesting, capacity 6 cubic meters. The dump body can be tipped over both the right side and the left one of the dumper (mod. CPL 60). The height varies from 2,40 to 3,60 meters. Hydraulic brake mechanically operated.

On demand: possibility to tip on the back side (mod. CPP 60).

**New** Possibility to have tandem axles and 4 wheels



## CX tape

Roller for drip irrigation pipes. Suitable for underground and on the ground pipes; Central fixed frame equipped with the three attachment points for the rear lifts of tractors; It can be mounted on both right and left side of tractors; Hydraulic re-winding motor with anti-break system; Rotating joint for operation in three positions; Perfectly balanced frame; Conveyor roller designed for a simple output of the coil of tape. Transport on the tractor easy thanks to the closing device with rotating joint. Front and rear rewinding possible positions.

Optionals: re-winding system with hydraulic roller-guide for usage on the border of fields; Hydraulic opening device for easy drip line extraction from the reel.

## AVX flat roller

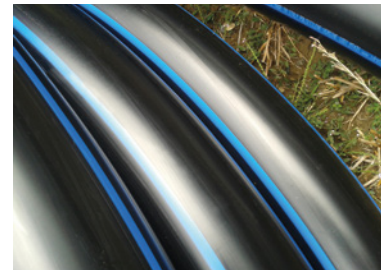
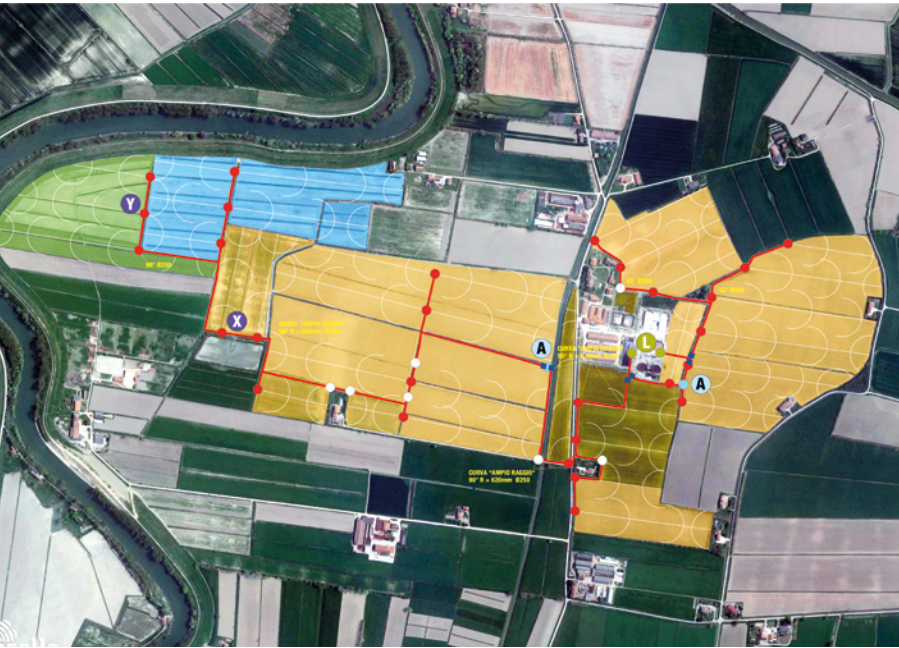
Roller for flat hoses for drip irrigation. Central fixed frame equipped with the three attachment points for the rear lifts of tractors. Hydraulic rolling and opening with hoses connected with the hydraulic system of the tractor. Max. capacity 250 m. Possibility to collect thousands of kilometers of flat hoses on many wheels separately.





# Underground pipeline







Specific projects and complete creations of underground pipelines in HDPE or PVC, for distribution of water, slurry and manure. Multi-year know-how, visits in the farms before designing, proper studies, use of materials only with certificate, all the activities from the project to the final test, ensure quality, reliability, certainty.

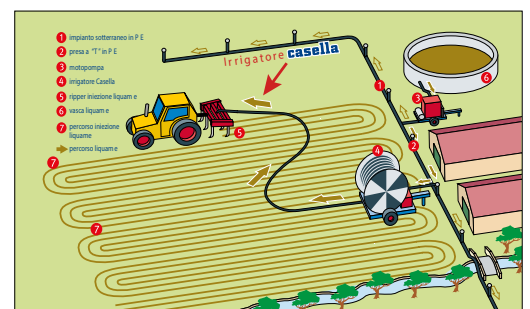


# Manure underground injection

**Ripper 3 m - 7 anchors - how to transform manure into a resource**

CASELLA solution for manure buried distribution through ripper, is the final answer to "manure" problem. From slurry tank/pool, using a pump, the manure will be transferred to an underground polyethylene pipe, conveniently designed with many outputs to reach all farm's lots. CASELLA irrigator is connected to one of these sockets, and the pipe to the ripper. The tractor, which is attached to ripper, cover the entire field lengthwise following a particular distribution scheme. Manure will be injected nonstop for a depth of 15/25 cm through special pipes locked behind each ripper's anchor.

-  Possibility of burying even 200 m<sup>3</sup>/h, with zero environmental impact, so the biggest problem of manure distribution (stink) doesn't exist anymore.
-  All organic matter contained in manure is absorbed by ground and does not evaporate anymore; It will be completely available for subsequent cultivations.
-  Placer mining effects caused by rain after distribution are reset to zero, and even ground water or surface water polluting, on hill terrains too.
-  Manure buried distribution during cultivation of the terrain: it saves a passage without making compact the terrain, even with wet terrain.
-  Use of the same system (underground pipes PE and CASELLA irrigator) even for irrigation and fertilizing irrigation.
-  The underground polyethylene pipe completely welded is the most reliable solution for the transport of manure and water; it has indeed an almost unlimited duration.





# Precision Farming



## Smart Smiley Sensor PATENTED SYSTEM

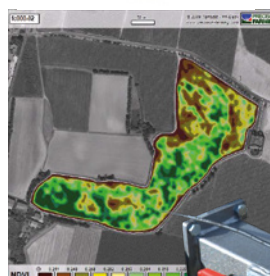
Unmatched in its way, it is a multiparameter sensor specifically developed for the characterisation of the vegetation canopy and of the micro-environment in vineyards and orchards (MECS-VINE) or row crops (tomatoes, corn, etc.) (MECS-CROP). The application on variable rate (VRT) agricultural machines optimizes and reduces the quantity of chemical and organic fertilizers or products for crop protection (from 20 to 50%). Possibility of real time use: while the sensor is mapping, a control unit controls the VRT machines on the back side of the tractor for a proper VRT distribution.



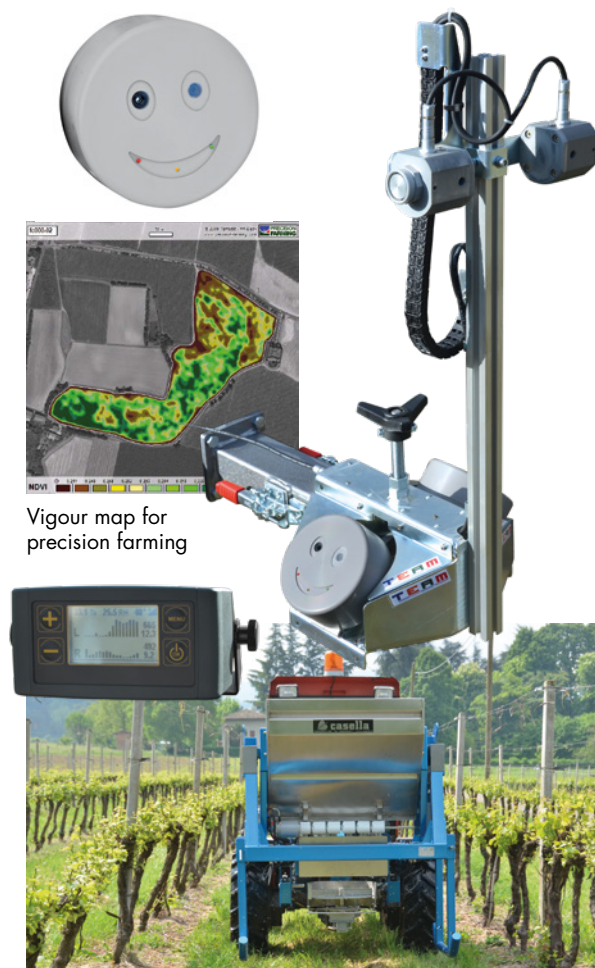
Usage in vineyards and orchards



Usage in open fields



Vigour map for precision farming



## Variable rate technology spreader Spread-Sat



- Standard capability 500 liters
- Compensated weighting system
- Work with inclination till 40° both transversal and longitudinal
- Automatic Variable rate metering
  - Integrated GPS Receiver
- Broadcasters or localized distributor system
  - Easy-use display in the cabin: it fits for all kind of tractors
- Possibility to distribute changeable doses of product according to a distribution map.

## Rippersat

VRT manure distribution, according to specific maps. Through a central unit on the tractor, it is possible to change the speed advancement and so the quantity of manure distributed. While the ripper covers the field and passes through different fertilizing limitation zones, the system adapt to the needing variability modifying speed advancement. A sophisticated electronic meter allows to record the actual capacity on the central unit, producing a GPS coordinates map of distribution.



## Hydrosat

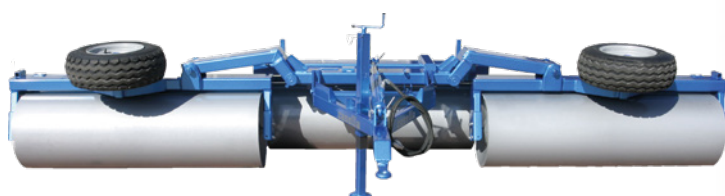
The irrigation system Hydro Sat is composed by: a control unit on which are stored the irrigation maps and a satellite receiver mounted on the sprinkler (with its solar panels that ensures autonomy). The control unit and the platform communicate using a radio-modem system. The rewinding speed of the trolley is so modulated according to the different needs of irrigation identified by the map.



## Compactor rolls

**Compactor** roll mod. Simple: Width available: 4.60, 5.60, 6.30 mt.

**Crumbling** roll mod. Cambridge: Width available: 4.60, 5.60, 6.30 mt.

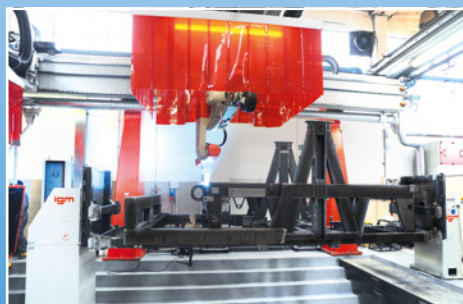




# since 1954

## The true Irrigation

Founded in 1954 by Ugo Casella and currently led by Francesco, Ettore, Paolo and Roberto Casella. 100 employees, based in Carpaneto Piacentino (PC), area of 75.000 m<sup>2</sup>, with 25.000 m<sup>2</sup> of offices and buildings, spare parts warehouse, workshop, machineries exhibition. Leader in the construction of machines and equipments for irrigation and distribution of sewage and in the use of satellite technology VRT. Reliability, quality and a timely and qualified after-sales service by the use of internal staff.



  
**casella**  
Casella Macchine Agricole srl

Loc. Cà Vezzeno 1/A - 1/B  
29013 Carpaneto P.no - Piacenza • Italy  
Tel. +39 0523 853911  
Satellite coordinates N 44,91800 E 9,77500  
[www.casella.it](http://www.casella.it) - [info@casella.it](mailto:info@casella.it)



Casella Macchine Agricole S.r.l.

